



Nextreme[™] NRC400

Performance Chiller

Nextreme™ NRC400 Performance Chiller

- Thermoelectric Cooling
- Precise Temperature Control
- Compact Form Factor
- Reliable Solid-State Operation
- Intuitive User Interface
- Low Noise Operation

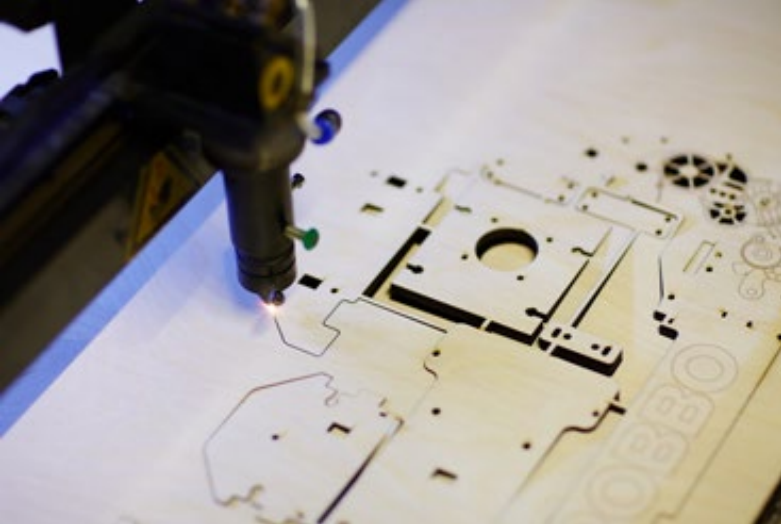


400
Watts of
Cooling Power

0
Global Warming
Potential



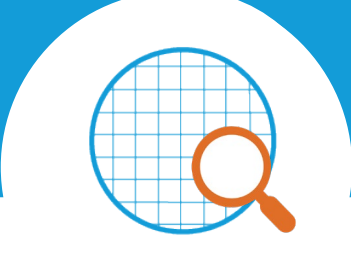
Application Overview



Laboratory Equipment
Digital Microscopes
Cooling Baths



Low-Power Industrial Lasers



Semiconductor Metrology & Inspection Systems

Why Thermoelectric Chillers?



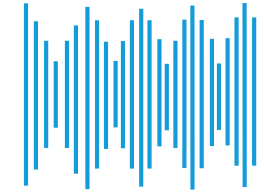
HIGH TEMPERATURE
STABILITY



HIGH RELIABILITY



PORTABLE



LOW NOISE &
VIBRATION



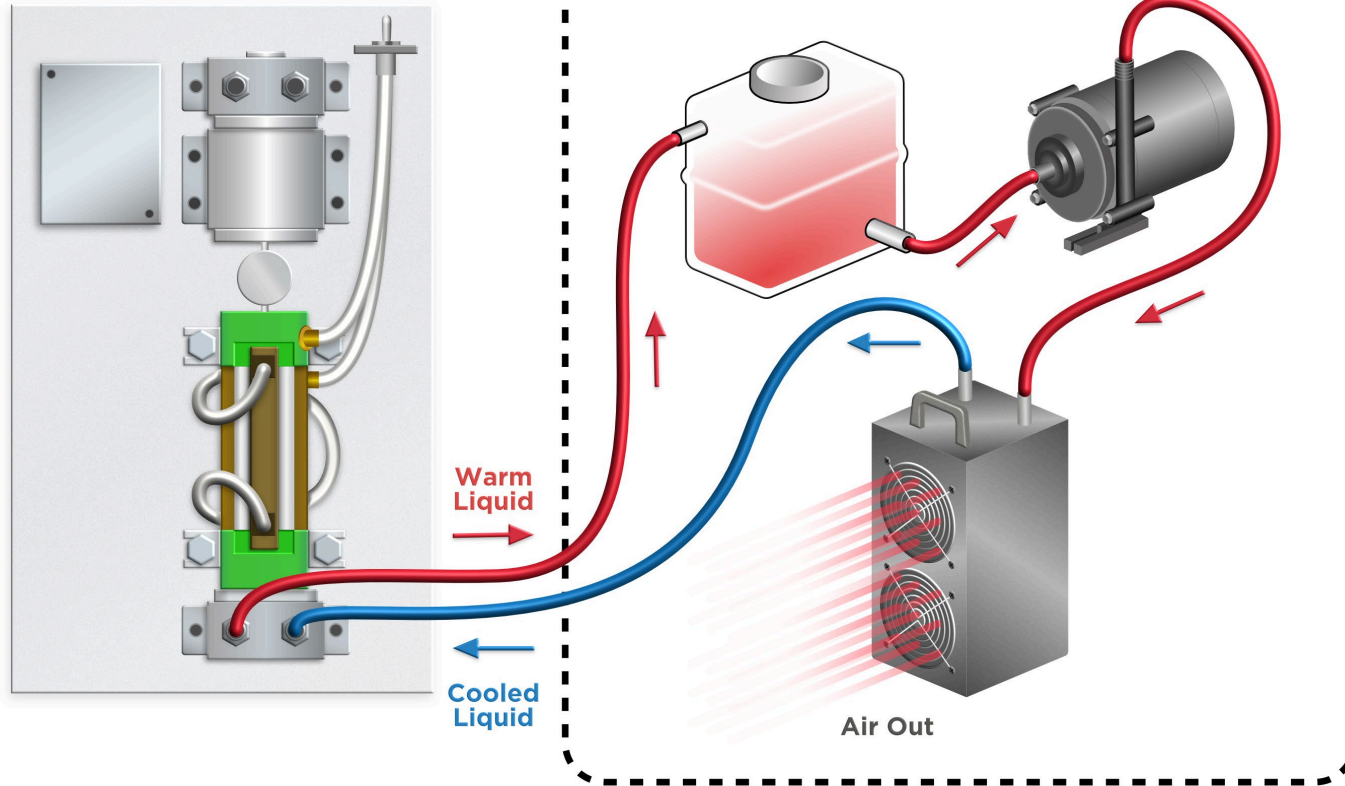
USER FRIENDLY



ECO FRIENDLY

How do Thermoelectric Chillers Work?

Industrial Laser Application
(Connects to liquid circuit)



Part of the Nextreme™ Chiller Family



The Nextreme™ Performance Chiller Series is available in 400, 1600, 2800 and 4900 Watts

Laird Thermal Wizard Tool



The Thermal Wizard helps engineers simplify and speed up the product selection process

Know your Cooling Requirement?

Move a slider to the desired Qc and click SEARCH

Thermoelectric Coolers
Solid-state peltier cooling components
Slider: 0.1 to 500

Thermoelectric Cooler Assemblies
Peltier air conditioners, liquid chillers, or cold plates
Slider: 10 to 500

Liquid Cooling Systems
Recirculating chillers and liquid heat exchangers
Slider: 100 to 100K

Custom Cooling Solutions
Full range of cooling solutions
Slider: 100 to 100K

Cooling Requirement - Qc: Watts $\Delta T = 0$ °C Click SEARCH to view thermal solutions

Don't Know your Cooling Requirement?

Choose an example or complete the requirements

Industrial Laser X-ray Tube Sputtering Target Electron Microscope Additive Manufacturing Pump Laser

LIQUID FLOW RATE
Fluid Flow Rate L/min

FLUID DEFINITION
Water
Density kg/m³
Specific Heat J/kg*K

Liquid Inlet
Cooled Liquid Outlet

TEMPERATURE
Inlet °C
Outlet °C

For More Information

[Nextreme™ Support Page](#)

[NRC400 Datasheet](#)

[Buy Now](#) through authorized distributors for overnight delivery

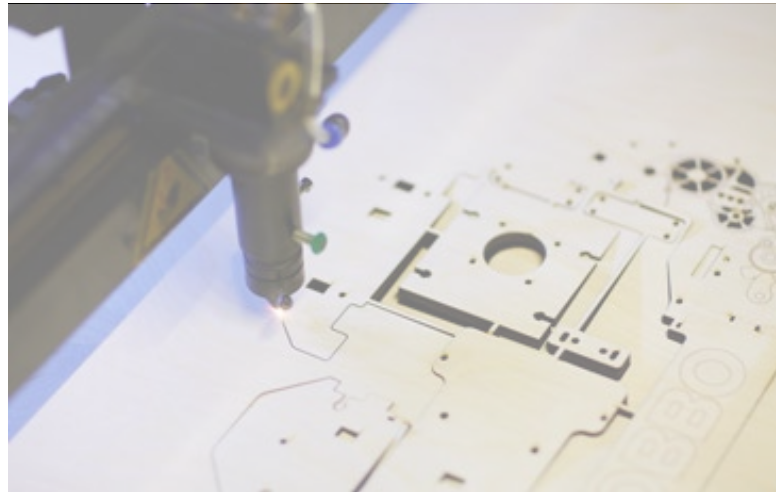
Learn more about thermal management for



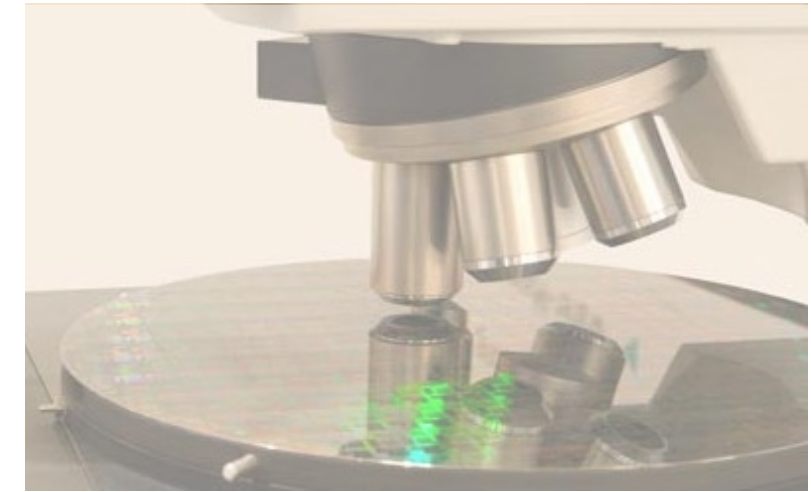
[Digital Microscopes](#)



[Industrial Lasers](#)

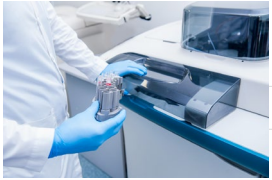


[Semiconductor Metrology](#)



About Laird Thermal Systems

Laird Thermal Systems develops thermal management solutions for demanding applications



Medical



Analytical



Industrial



Transportation



Telecom

● **DIVERSE PRODUCT PORTFOLIO**
Thermoelectric Coolers, Thermoelectric Cooler Assemblies, Temperature controllers and Liquid Cooling Systems

● **SOLVING COMPLEX ISSUES**
Our engineers use advanced thermal modeling and management techniques to solve complex heat and temperature control problems

● **ACCELERATING TIME-TO-MARKET**
We partner closely with our customers across the entire product development lifecycle.

● **MAXIMIZING PERFORMANCE**
Our global manufacturing and support resources help customers maximize productivity, uptime, performance and product quality

Laird Thermal Systems is the optimum choice for standard or custom thermal solutions

Learn more by visiting
www.lairdthermal.com





Have a question or need more information about
Laird Thermal Systems? Please contact us via the website at www.lairdthermal.com



Nextme-NRC400-Performance-Chiller-Presentation-100621

Trademarks

© Copyright 2021 Laird Thermal Systems, Inc. All rights reserved. Laird™, the Laird Ring Logo, and Laird Thermal Systems™ are trademarks or registered trademarks of Laird Limited or its subsidiaries. Nextreme™ is a trademark of Laird Thermal Systems, Inc. All other marks are owned by their respective owners.